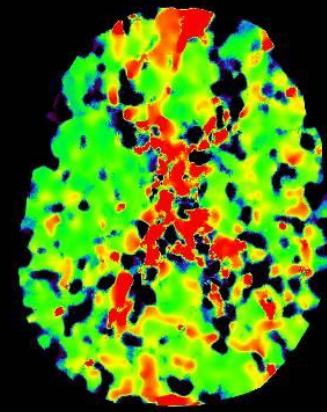
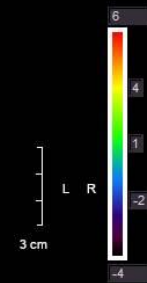
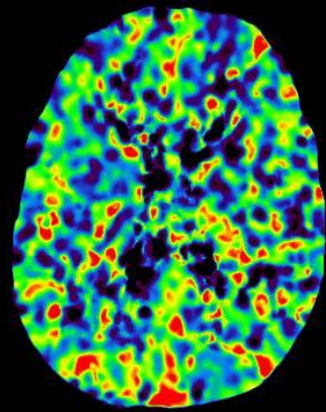
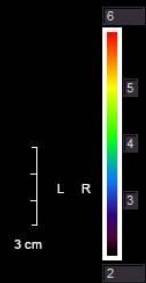
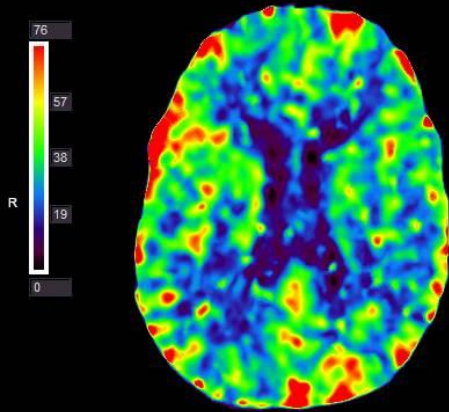
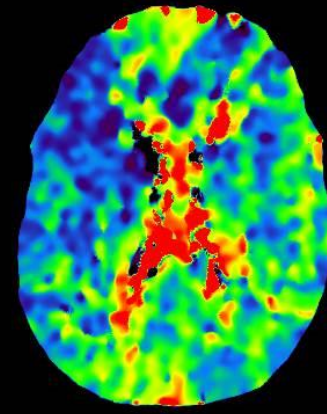
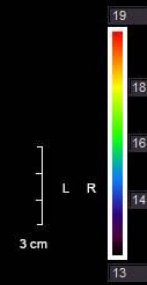
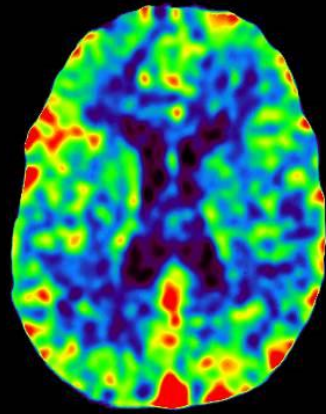
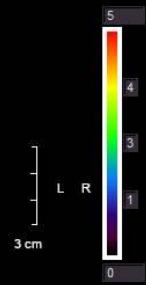


# CASO PROBLEMA

- Varon 69 a
- FRV, FA
- 15.00 cuadro hemiférico izdo (NIHSS 12)
- 21:40, TC y rtPA i.v.

# TROMBECTOMÍA MECÁNICA

- EFECTO 1ER PASE CON TREVO NXT



Vitreae®  
Zoom: 152%  
Batch #18  
W/L: 70/38  
Oblique 5mm Average  
Registered  
rCBF (ml/100g/min) SVD+

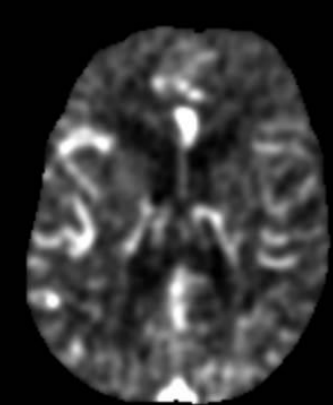
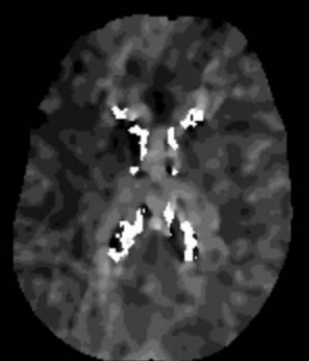
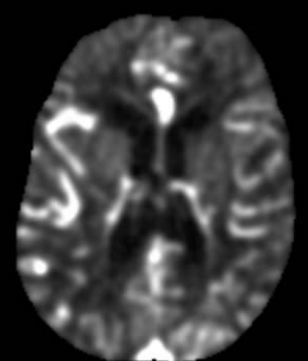
Vitreae®  
Zoom: 152%  
Batch #18  
W/L: 44  
Oblique 5mm Average  
Registered  
MTT (sec) SVD+

Vitreae®  
Zoom: 152%  
Batch #18  
W/L: 101  
Oblique 5mm Average  
Registered  
Delay (sec) SVD+

CBF

Tmax

CBV



● CBF<30%: 0 ml

● Tmax>6.0s: 0 ml

Mismatch volume: 0 ml

Mismatch ratio: none

● CBV<34%: 0 ml

● CBV<38%: 0 ml

● CBV<42%: 0 ml

CBV Index (rCBV in Tmax>6s): ---

RAPID  
Página: 9 de 14

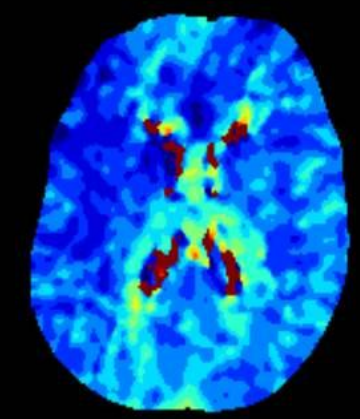
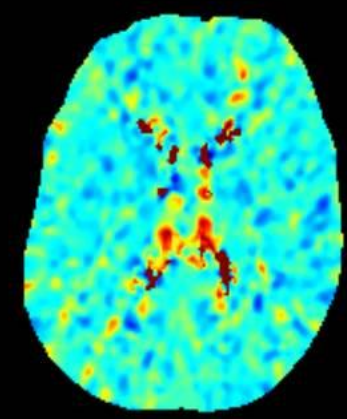
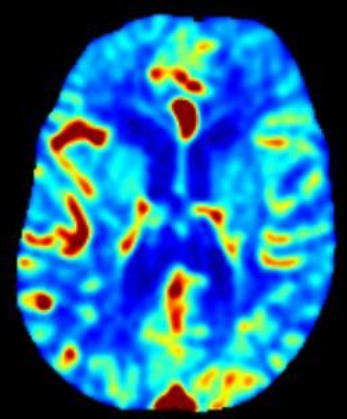
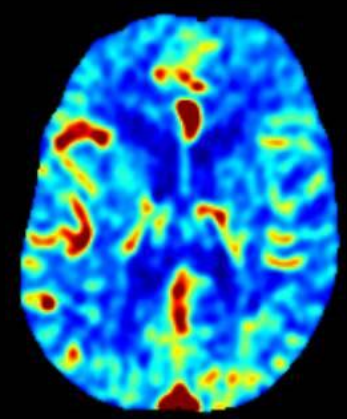
IM: 9

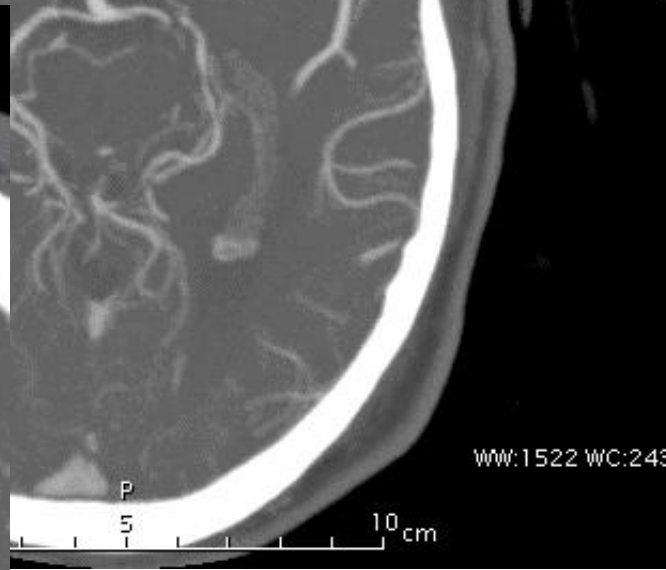
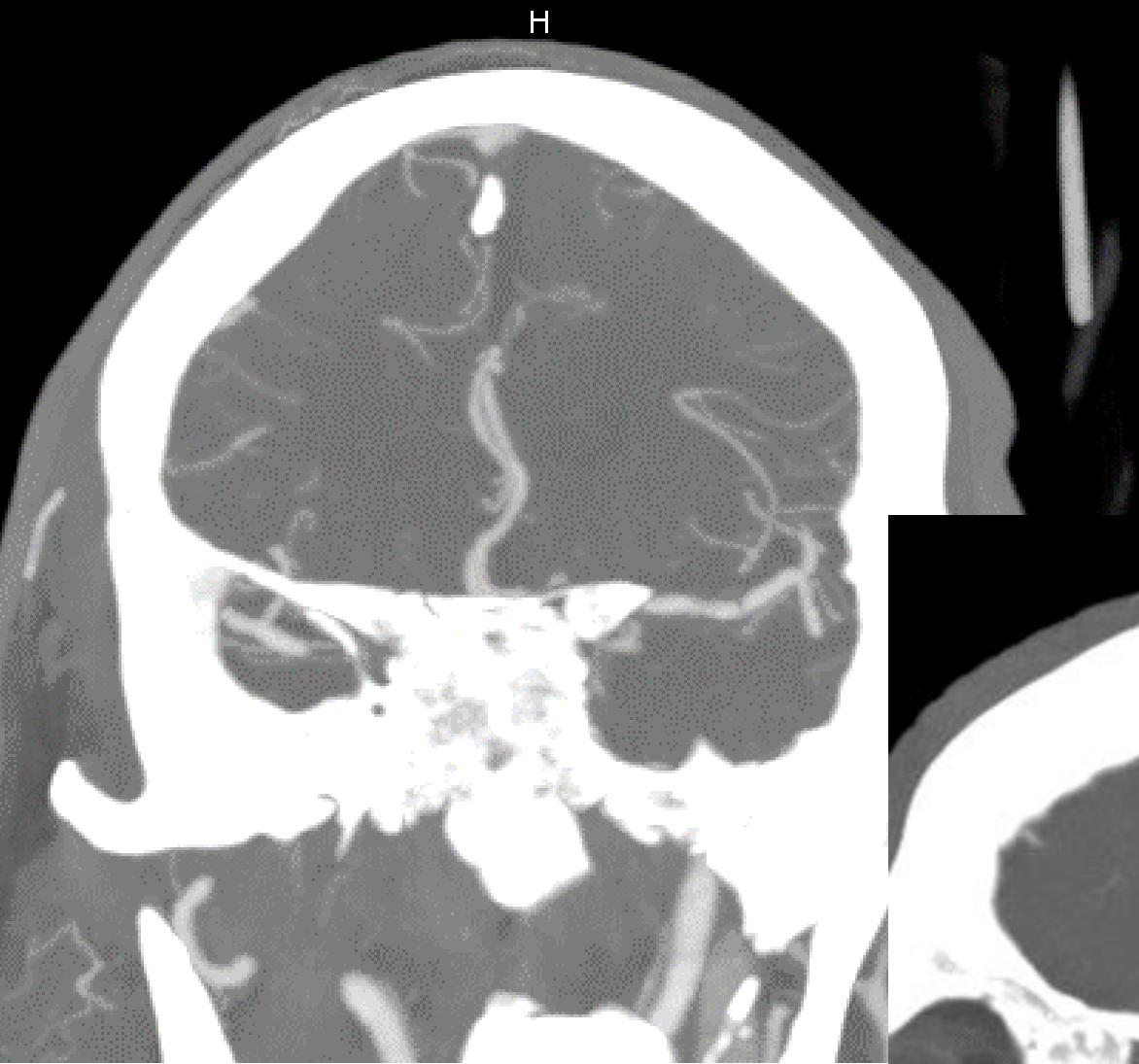
IM: 9

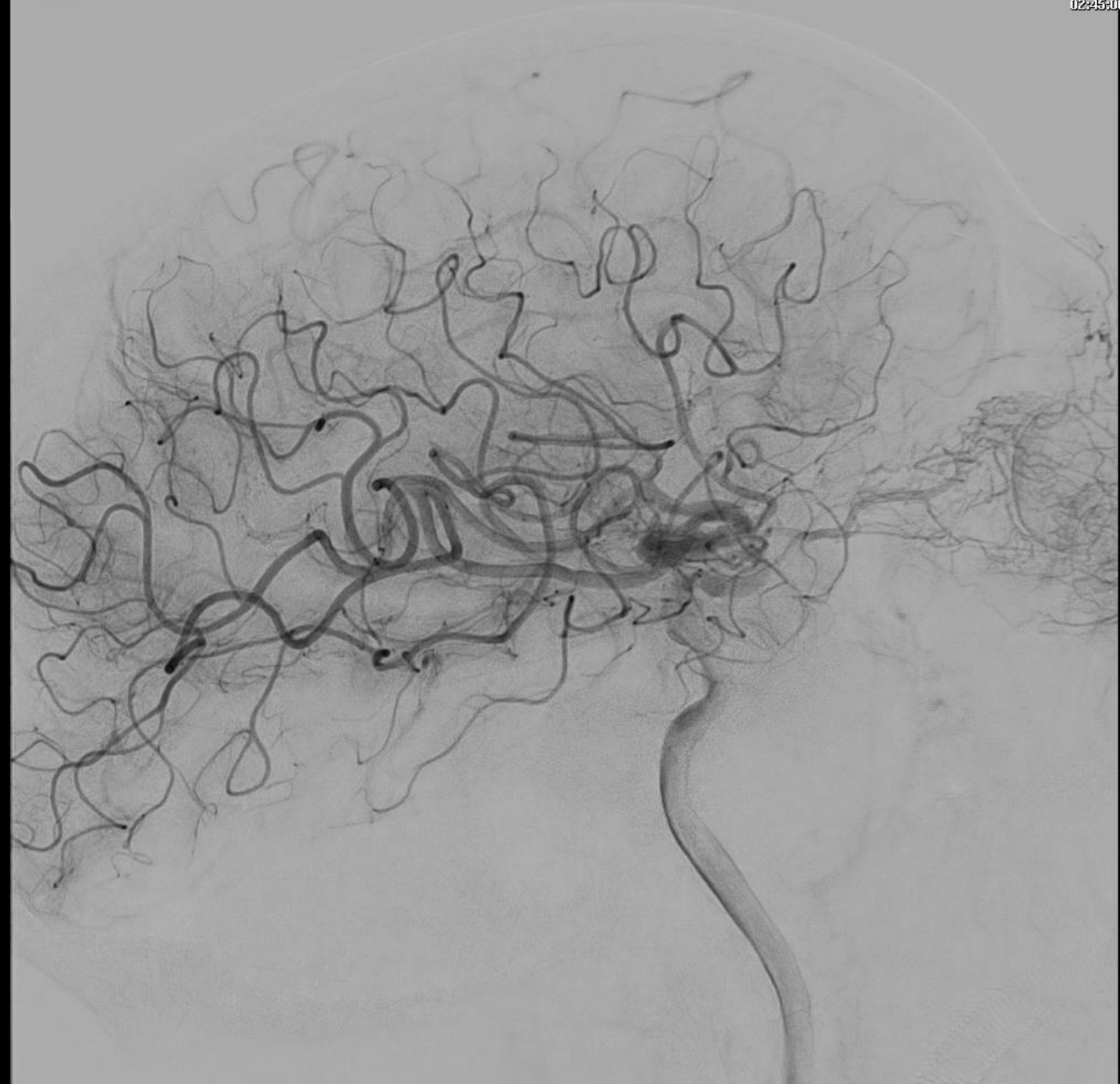
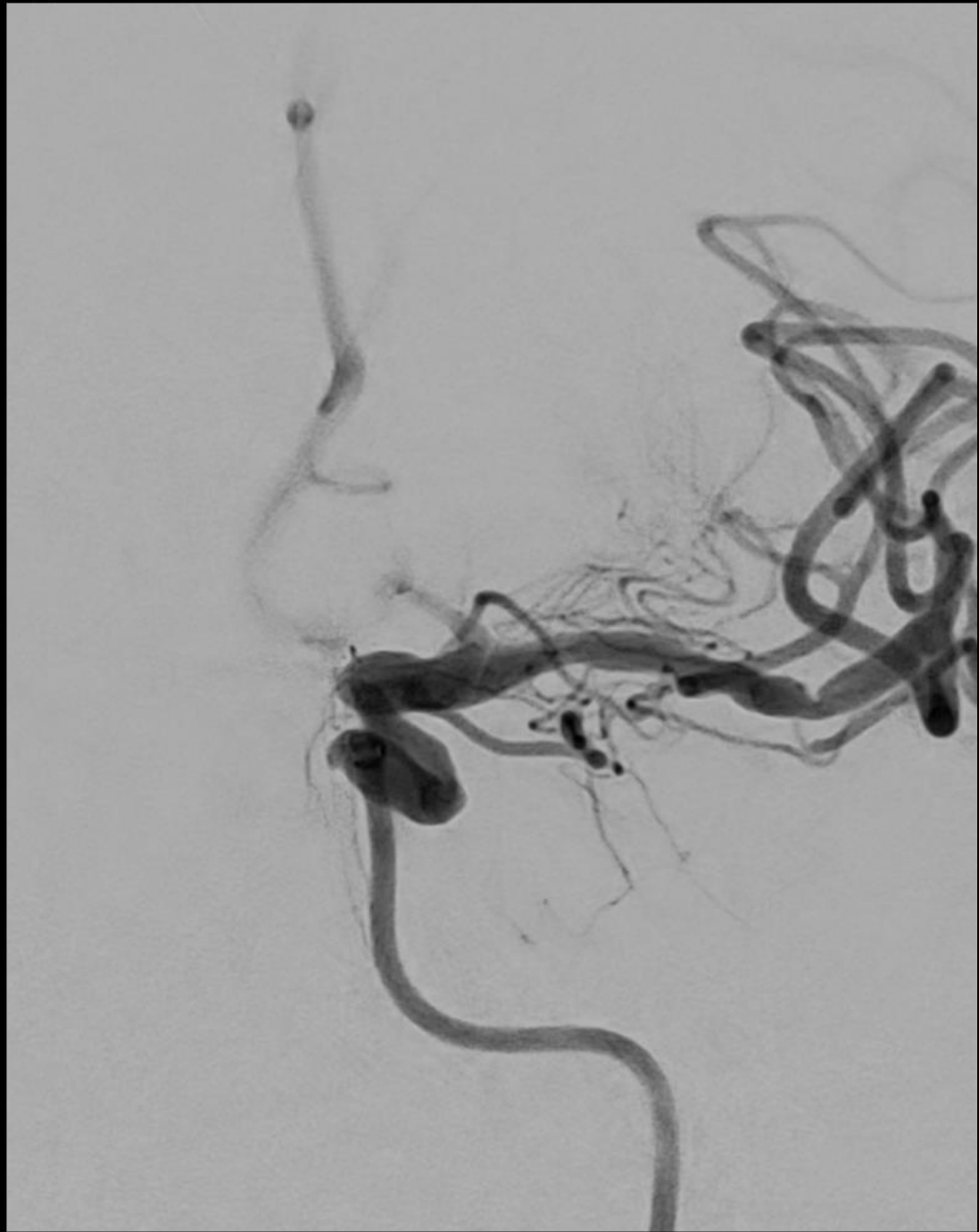
rCBV

rCBF

MTT









1 PASE, TREVO NXT 4X28

- DÍA+1 (14:53): NIHSS 13, (22:40): NIHSS 9

- TC: ASPECTS 10



- DIA+2: NIHSS: 8
- DIA+3: NIHSS: 5
- DIA+5: NIHSS: 3
- DIA+8: NIHSS: 3, mRS: 2